

COMPANY PROFILE



House 34, Road 18, Sector 07, Uttara, Dhaka – 123, Bangladesh
www.laplandtextile.com | | office@laplandtextile.com | | +8809611677912



ABOUT US

Lapland Textile Mfg. is a unique merchandise-manufacturing management hub based in Dhaka-Bangladesh, est. 1999. We are a fast growing apparel manufacturing company in Bangladesh -sourcing fashion accessories for our customers across the world. The entire collection of mid to high quality fashion items are made for Men`s, Women`s, Kids.. name it. We have the flexibility to meet the trend in all aspects of design, quality, and other developments which are most desired by today`s fashion conscious market.

We manage the global sourcing requirements of over 11 companies. Our global leverage, and experience, avails our clients of the best product at the best possible price. These clients include some of the most significant brands, department stores, catalog companies and importers in America and Europe.

We are providing professional guidance in out-sourcing of ready-made garment production in the most competitive markets in Asia.

We have strict policies for any violation or abuse of human rights, child labor laws and factory safety standards. Lapland Textile Mfg. has a passion for detail, quality, service, and the ethical conduct of commerce.



"We will grow by building leading lifestyle brands that excite consumers around the world".

www.laplandtextile.com

OUR BUSINESS

Our core business is garments merchandise-manufacturing. We apply our collective sourcing experience to make the best possible products at the best competitive price, in order to meet each of our customer's specific requirements. We purely focus on customer demands. We offer to our customers a wide range of development expertise, best design intelligence and up-to-date market information. Our company operates a vast global network covering across Europe, America and Asia. We have a vast network of factories, vendors which have been technically and ethically audited to international standers. In addition to the broad range and diversity of consumer products available through its extensive international sourcing network, product design and development to provide absolute global sourcing solutions for its customers.

We are committed to develop close ties with our esteemed customers through personalized services, cooperation, and assistance, which translate into the highest standard in quality, delivery time, and value. Our hands-on and versatile management approach allows us to monitor all the processes, from pre assessments to shipping, in order to address and comply with all of our customers' needs and expectations. container.



We have 3 own factories incl. (knit, woven) production in Bangladesh, which is absolutely high profile factories at around. To ensure customer satisfaction, we work on followed from the time of developing samples until the ready-made garment is loaded into the

R & D

Lapland Textile Mfg. R & D teams in different location source and develops the latest fabrics, finished and washes ahead of market. We recognize a number of ways to advance our portfolio's performance, from creating new styles.

Our aim is to meet our customers' needs and to be best for service, quality, price and design. We also have the big advantage of having a wide range fabric research and working with the best suppliers. Fabrics used for our products can be sourced from local market or Far East in order to meet our customers' demands.

we define innovation as "something new that creates value." Innovation allows us to deliver new products and experiences that consistently delight customers, and it drives organic growth and higher gross margins.

We foster a culture of innovation within our company through collaborative networks and by building the talent and skills needed to inspire new ideas.



"We develop products and customize services for our customers"..

www.laplandtextile.com

PROCUREMENT

Lapland Textile Mfg. largest apparel sourcing companies, we're committed to sourcing fabrics and accessories and factories for our entire customer. Our culture is perpetually driven—focused on constant innovation. Using deep research and insights. We combine the art and science of apparel to create products that excite customers and brand loyalty.

We conduct business with the highest levels of honesty, integrity and respect for others, and we foster a positive work environment based on creativity, collaboration and congeniality.

Our company forces to create and develop a successful business by identifying where the opportunity for sourcing products met customer needs in faraway markets. That same entrepreneurial spirit of agility and simplicity is very much alive today and continues to drive the way we support our customers, suppliers, the industry and communities to grow.

We care about our customers, vendors and communities and about creating a sustainable future together.

In order to give the best price and service, we evaluate the needs of our customers and assign the most suitable production unit according to those needs.



"In our modern production unit our emphasis is always on quality, on time delivery and efficiency"

www.laplandtextile.com

PRODUCTION & QUALITY CONTROL



Lapland Textile Mfg. owned manufacturing capability creates several advantages, including greater control over speed, price and quality and the ability to introduce innovations directly into our operations.

We are able to manufacture small or big quantities in premium quality that best fits our customer's price specification. We provide our customers with the most suitable factories depending on their product and order.

Lapland Textile Mfg. either works to its clients' quality guidelines or when not specified, to our own standards derived from years of experience across multiple product categories.

Our quality-control procedures include vigorous on-site inspection of raw materials, examination of in-line production, and a pre-shipment final inspection.



We ensure that our clients' merchandise is made to the highest quality standards, in an ethical work environment, and shipped on time.

Production Control- with experienced and skilled on-site quality control teams ensures the best quality of products to meet the international standard..

Pattern Test / Trial Inspection / In-Process Inspection / Pre-Final Inspection / Final Random Inspection

www.laplandtextile.com

CODE OF BUSINESS CONDUCT

Lapland Textile Mfg. is committed to ethical, compliant and sustainable business in every aspect of our operations and supply chain management. Our CSR program is the tool, by which we execute rigorous supplier certifications, coaching/mentoring, proprietary audits and unannounced monitoring.

A set of requirements to social compliance must be fulfilled by all vendors:

Forced Labor- No person shall be employed in the form of prison labor, indentured labor, bonded labor or otherwise. All Lapland Textile Mfg. authorized facilities must observe the legal requirements by local law regarding forced labor.

Child Labor- No person shall be employed at any age younger than 14 or younger than the age for completing compulsory education in Bangladesh. All factories producing Lapland Textile Mfg. orders must observe the legal requirements and conditions under local labor law concerning employees under the age of 14.

Harassment/Discrimination- All factories producing order for Lapland Textile Mfg. must treat all employees equally with respect and dignity, race, religion or gender may not be subject for physical or verbal harassment or abuse. In addition, these factories shall not use monetary fines as a disciplinary practice.



CODE OF BUSINESS CONDUCT

Employment & working conditions and working environment

All suppliers and factories producing Lapland Textile Mfg. orders are entitled to a written employment contract in the local language, containing the employment terms and conditions. The employer shall ensure that all employees are informed of their legal rights and obligations.

Hours of Work- All suppliers and factories producing Lapland Textile Mfg. must ensure that all employees shall not be required to work more than the maximum hours allowed under the local labor law for a standard work week. Overtime work shall not be required on a regular base and has to be compensated at a premium under the local law. Total hours, inclusive any overtime work, should not exceed 60 hours per week. All employees will be entitled to at least 24 consecutive hours off per week. The employees shall be granted and correctly compensated for any types of paid leave to which they are legally entitled.

Wages and Benefits- Lapland Textile Mfg. recognizes that compensation packages vary by country. All factories producing orders for Lapland Textile Mfg. have to compensate their employees fairly by providing compensation packages, comprising wages and benefits that comply with legally mandated minimum standards or the prevailing industry wage, whichever is higher. Employees must be fully compensated for overtime work according to local labor law and each employee must be provided with a clear, written accounting statement for each pay period. Advances and deductions from wages shall be carefully monitored, and have to comply with the law.



CODE OF BUSINESS CONDUCT

Safety and Health- Factories producing orders for Lapland Textile Mfg. must provide their workers with a clean, safe and healthy work environment, designed to prevent accidents and injury, including protection from fire, and toxic substances. Lighting, heating and ventilation system should be adequate. Workers should have access at all times to sanitary facilities, which should be adequate and clean. No hazardous equipment or unsafe buildings are accepted. Dormitories (if any) are clearly separated from the production facility and/or warehouse and comply with all legal regulations regarding residential facilities.

Labor Practices

Factories producing orders for Lapland Textile Mfg. should not restrict or prohibit the right of workers to join unions or bargain collectively where permitted by local law.

Environmental Protection/Handling of chemicals- Factories producing orders for Lapland Textile Mfg. must comply with all laws and regulations relating to

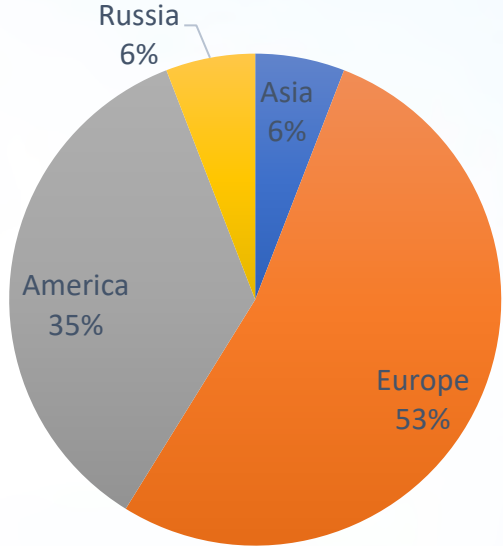
environmental protection in the countries in which they operate. Facilities should have policies and procedures in place to ensure that environmental impacts are minimized with respect to energy, air emissions, water, waste, hazardous materials, and other significant environmental risks.

Subcontracting- Lapland Textile Mfg. suppliers will not place any orders to any subcontractor without written approval.



OUR CUSTOMER

SL.	Region	No of Customer	Percentage
1	Asia	1	5.88%
2	Europe	9	52.94%
3	America	4	35.29%
4	Russia	1	5.88%



■ Asia ■ Europe ■ America ■ Russia



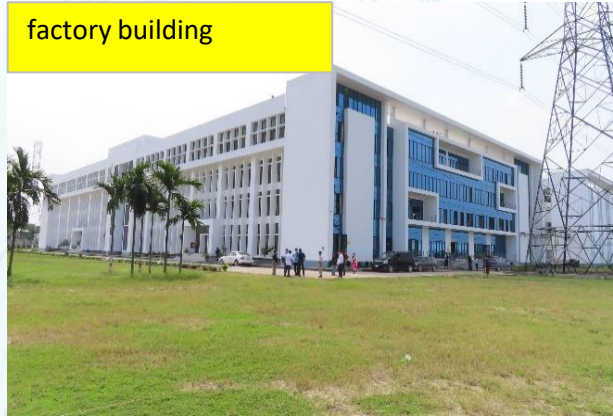
FACTORY BUILDING & SHED

lapland
textile mfg

factory building



factory building



factory shed



factory building



factory shed



factory shed



"In our modern production unit our emphasis is always on quality, on time delivery and efficiency"

www.laplandtextile.com

HEALTH PROTECTION

workers dining



workers dining



first kits



child care



child care



doctors room



doctors room



toilet



"In our modern production unit our emphasis is always on quality, on time delivery and efficiency"

FIRE PREVENTION / WAREHOUSE

fire hydrent



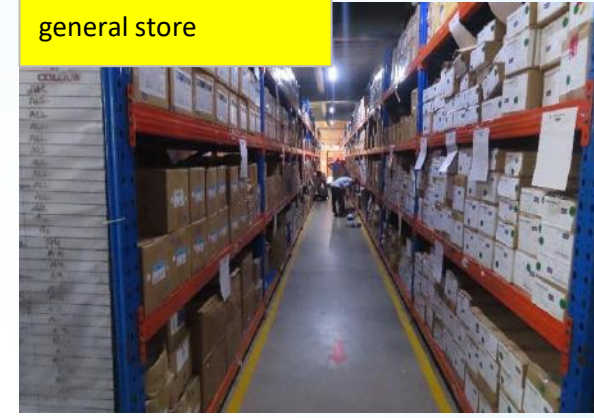
fabric warehouse



electric pannel



general store



fabric warehouse



fabric warehouse



yarn store



finish ctn warehouse



"In our modern production unit our emphasis is always on quality, on time delivery and efficiency"

LAB / ETP / WASHING / WINDING

lab



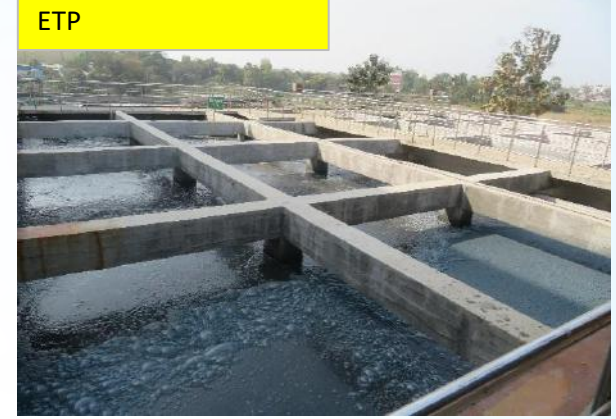
lab



ETP



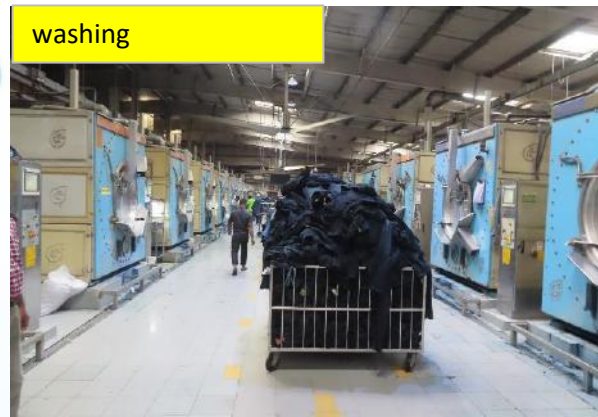
ETP



washing



washing



"In our modern production unit our emphasis is always on quality, on time delivery and efficiency"

PRODUCTION UNIT



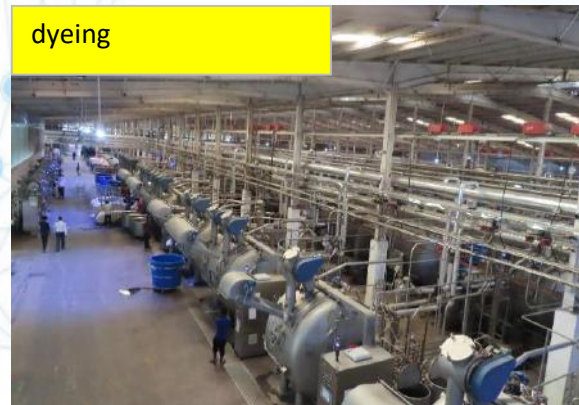
knitting



knitting



dyeing



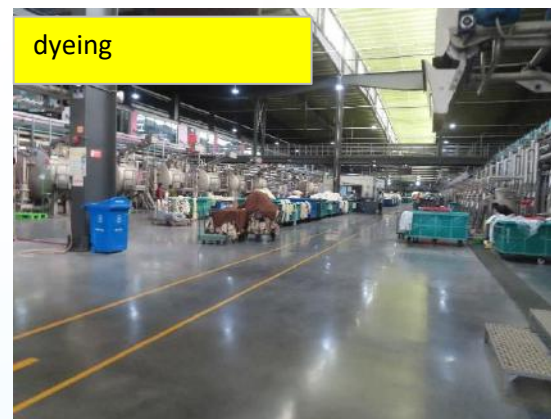
dyeing



dyeing



dyeing



"In our modern production unit our emphasis is always on quality, on time delivery and efficiency"

www.laplandtextile.com

PRODUCTION UNIT

cutting



cutting



cutting



sewing



sewing



sewing



"In our modern production unit our emphasis is always on quality, on time delivery and efficiency"

PRODUCTION UNIT

sewing



sewing



finishing



finishing



sewing



finishing



finishing



finishing



"In our modern production unit our emphasis is always on quality, on time delivery and efficiency"

PRODUCTION UNIT

Finishing



Finishing



Finishing



Finishing



Finishing



pkg



"In our modern production unit our emphasis is always on quality, on time delivery and efficiency"

INFORMATION



Company Name	Lapland Textile Mfg.
Business Address	House: 34, Road: 18, Sector: 07, Uttara, Dhaka-1230, Bangladesh Email: office@laplandtextile.com Tel: +880 9611677912
Est. Year	1999
Contact Person	Hasna Johir Borno and Hasna Jesmin Aronno (Business Development)
Annual Turnover	\$ 90 Million
Banking	NCC Bank Uttara Branch A/C: 00330210024311 Account Name: Lapland Textile Mfg.
No. of Employees	6500 (incl. factory)
Product Line	Jeanswear, Sportswear, Knitwear
Customers	Lindex, Tchibo, Tom Tailor, s. Oliver, Carrefour, Old Navy, Timberland, OshKosh, Columbia
Mode of Payment	100% Irrevocable / transferable LC at sight
Mode of Delivery	FOB, TT
Shipment Lead Time	60-90 days for local fabric, 90-120 days for imported fabric
Nature of Business	100% export oriented- Apparel/Clothing manufacturing company
Social Ethics	Our factories certified by BSCI, SEDEX, WRAP, GOTS, ILO, RSC, BETTER WORK & WORLDLY
Website	http://www.laplandtextile.com



House: 34, Road: 18, Sector: 07,
Uttara, Dhaka-1230, Bangladesh
Email: office@laplandtextile.com
Tel: +880 9611677912